

Customer Premises, Buildings and Cell Sites

Polaris-box Family

Multifunctional for a flexible fiber optic termination





Polaris-box 4

Polaris-box 6

Polaris-box 16

Polaris-box 24

Polaris-box 36

| | | | | | |
|---|-------------------------|-------------------------|----------------|----------------|----------------|
| Protection class | IP65 | IP65 | IP65 | IP65 | IP65 |
| Number of adapters E-2000, SC, LC-Duplex | 2/4 | 6 | 16/24 | 24 | 36 |
| Number of splices | 12 ... 24 | 12 ... 60 | 12 ... 24 | 12 ... 144 | 12 ... 288 |
| Number of FMTS trays | - | 4 | - | 12 | 24 |
| Number of splices FMTS | - | 4/12 | - | 4/12 | 4/12 |
| Number of cable inserts top/side | 2 only side entries | 2/2 | 2/2 | 2/2 | 2/2 |
| Number of cable inserts below | 2 | 4 | 4 | 8 | 12 |
| Main cable inserts | 1 x R 3 - 13mm | 1 x R 3 - 13mm | 1 x R 3 - 16mm | 1 x R 3 - 16mm | 1 x R 3 - 16mm |
| Drop cable inserts, round | 12 x R 2 - 3mm | 12 x R 2 - 3mm | 16 x R 2 - 3mm | 16 x R 2 - 3mm | 16 x R 2 - 3mm |
| Drop cable inserts, Butterfly | - | - | 16 x 2 - 3mm | 16 x 2 - 3mm | 16 x 2 - 3mm |
| Drop cable inserts | 8 x 4 - 5mm (IP55 only) | 8 x 4 - 5mm (IP55 only) | 4 x 4 - 5mm | 4 x 4 - 5mm | 4 x 4 - 5mm |
| Overlength storage | | - | | | |
| Extendability | | | | | |
| Splitter application | | | | | |
| Collocation | | | | | |
| Size | compact | small | small/medium | medium | medium/large |

Customer Premises, Buildings and Cell Sites

Polaris Family



Polaris 4 (W x H x D) 156.0 mm x 230.0 mm x 63.0 mm / 6.14 in x 9.06 in x 2.48 in

The Polaris-box 4 is the smallest in the family and fits even into tiny spaces.

| | |
|------------------------------------|----------------|
| With Lock | R859107 |
| Without Lock | R859106 |
| Polaris 4 Pole Mounting Set | R878834 |



Polaris 6 (W x H x D) 190.0 mm x 285.0 mm x 60.0 mm / 7.48 in x 11.22 in x 2.36 in

Polaris-box 6 with external mounting points, equipped with cable strain-relief plate and a basic fiber inlay.

| | |
|------------------------------------|----------------|
| With Lock | R820282 |
| Without Lock | R820281 |
| Polaris 6 Pole Mounting Set | R820292 |



Polaris 16 (W x H x D) 218.0 mm x 315.0 mm x 112.0 mm / 8.58 in x 12.40 in x 4.41 in

The Polaris-box 16 is a distribution box with plenty of space for additional fiber storage. The swiveling fiber inlay separates the connectors from the splice connections.

| | |
|-------------------------------------|----------------|
| With Lock | R851085 |
| Without Lock | R851984 |
| Polaris 16 Pole Mounting Set | R878835 |



Polaris 24 (W x H x D) 263.0 mm x 371.0 mm x 150.0 mm / 10.35 in x 14.61 in x 5.91 in

The Polaris-box 24 is a versatile fiber optic termination with a swivel mounted fiber inlay.

| | |
|-------------------------------------|----------------|
| With Lock | R851087 |
| Without Lock | R851986 |
| Polaris 24 Pole Mounting Set | R878836 |



Polaris 36 (W x H x D) 330.0 mm x 450.0 mm x 150.0 mm / 12.99 in x 17.72 in x 5.91 in

The robust and highly compressed Polaris-box 36 is multi-functional. The top side of the fiber inlay has two separate areas for splice and plug connections.

| | |
|-------------------------------------|----------------|
| With Lock | R851083 |
| Without Lock | R851082 |
| Polaris 36 Pole Mounting Set | R878837 |

Polaris 4/6 Cable Sealing Elements



IP65 - 3mm-9mm **R820283**



IP65 - 9mm-13mm **R820284**



IP65 - 12x2-3mm **R820286**



IP54 - 3-13mm **R820285**



IP54 - 12x2-2.7mm **R820287**



IP54 - 8x5-8mm **R878849**

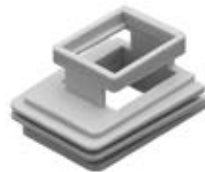


IP54 - 4x2-2.7mm & 3x7mm **R820289**

IP54 - 8x5mm **R820288**



IP55 - Bridge 2x box **R820290**



Adapter Entry (SC/LC) **R820291**

Polaris Box 16,24,36 Cable entry kit



3mm-5mm **R851090**

5mm-7mm **R851091**

7mm-9mm **R851092**

9mm-11mm **R851093**

11mm-13mm **R851094**

13mm-14mm **R851095**

14mm-15mm **R851096**

15mm-16mm **R851097**



4x 4-5mm **R820291**



12x 4-5mm **R872832**



15x 2-3mm **R851098**

16x 2-3mm Butterfly **R851099**



Cover Kit **R851088**



Blind Element **R851089**

FMTS Splice Trays



FMTS Splice Tray 12HS (1pc) **R895101**



FMTS Tray Cover (1pc) **R895103**



FMTS Splitter Tray (6pc) **R820097**



Labeling Sheet **R830928**