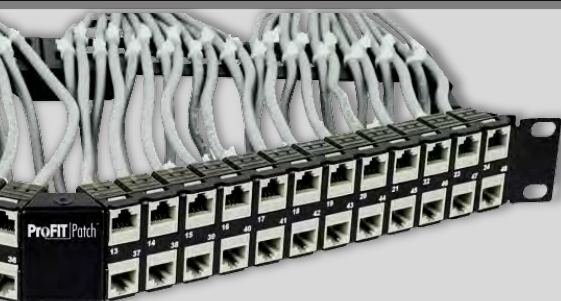


LYNN CONNECTIVITY SOLUTIONS

FIBER OPTIC & TWISTED PAIR ENCLOSURES



CONTACT US



1841 Industrial Ave
San Angelo, TX 76904
(325) 262-4031

www.unitedtelsupply.com



and





LYNN specializes in easy-to-install enclosures, cable management and connectivity solutions that integrate into small, medium and high-density installations.

FIBER OPTIC CONNECTIVITY



TheNID
Outdoor Wall Mount
Enclosures



SlimFIT™
Indoor Wall Mount
Enclosures & Wallplates



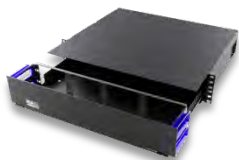
CORE™
Indoor Wall Mount
Enclosures & Panels



LGX
Indoor Wall Mount
Enclosures & Panels



LGX
Rack Mount
Enclosures & Panels



HDA
Rack Mount High-Density
Patch Panels



Optimus
Rack Mount Extreme-
Density Patch Panels

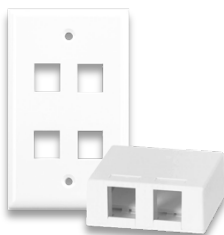
TWISTED PAIR CONNECTIVITY & CABLE MANAGEMENT



ProFIT
Rack Mount Patch
Panels & Keystone



Data Room Solutions
Cable Organization &
Management



In-Room Solutions
Wallplates & Surface
Mount Boxes

CONTACT US



1841 Industrial Ave
San Angelo, TX 76904
(325) 262-4031

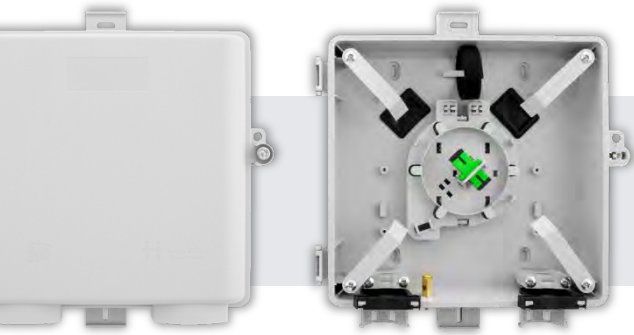
www.unitedtelsupply.com

UNITED
TEL • SUPPLY

and

LYNN





NID INDOOR/OUTDOOR ENCLOSURES

TheNID compact outdoor-rated enclosures are perfect for managing fiber optic connections in harsh environments. They are available in multiple configurations and are compatible with both round and flat drop cables.



Multiple models for various applications



Integrated copper ground lug



Slack storage for coiling up to 50 feet of fiber



Entry clamp accommodates both flat & round cable



Rubber grommets support up to 1" conduit



Optional model with ONT storage & cable management



Optional model with reel of factory pre-spooled fiber

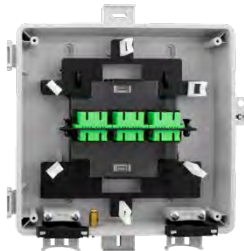


Optional custom laser engraving

TheNID PRODUCT LINES



Splice Enclosure
FPP-TN-A-86



LGX Panel Enclosure
FPP-TN-E-85



Reel Enclosure
FPP-TN-C3-SAB-NKH13



ONT Enclosure
FPP-TN-M-93

PART NUMBER	DESCRIPTION	DIMENSIONS (INCHES)	CONSTRUCTION	RATING
FPP-TN-A-86	NID SPLICE FIBER ENCLOSURE	9.1 H x 8.8 W x 2.9 D	GRAY OUTDOOR-RATED THERMO PLASTIC	GR-771
FPP-TN-E-85	NID LGX FIBER ENCLOSURE	9.1 H x 8.8 W x 2.9 D	GRAY OUTDOOR-RATED THERMO PLASTIC	GR-771
FPP-TN-C3-SAB-NKH13	NID WITH REEL FIBER ENCLOSURE	9.1 H x 8.8 W x 2.9 D	GRAY OUTDOOR-RATED THERMO PLASTIC	GR-771
FPP-TN-M-93	NID FIBER ONT ENCLOSURE	9.1 H x 8.8 W x 2.9 D	GRAY OUTDOOR-RATED THERMO PLASTIC	GR-771

CONTACT US



1841 Industrial Ave
San Angelo, TX 76904
(325) 262-4031

www.unitedtelsupply.com

UNITED
TEL • SUPPLY

and

LYNN





CORE™ INDOOR ENCLOSURES

CORE™ fiber optic enclosures feature a patented internal removable frame that provides easy setup and maintenance. Simply mount the outer chassis, wire the inner frame and then snap the two together.



Removeable inner frame for easy wiring & maintenance



Compatible with standard LGX panel inserts



Dual hinged enclosure for easy access to front & rear connections



Non-captive cable entry ports for easy setup & updates



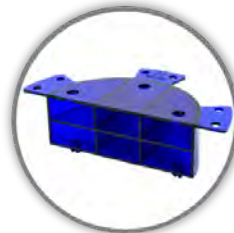
Dual locks on front & rear for added security



Built-in bubble level for fast professional mounting



Port labeling for quick identification of cable paths & connections

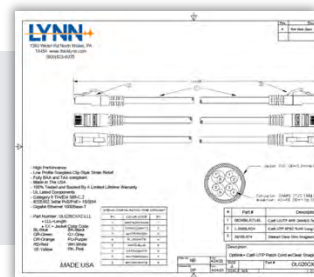


Stackable half-moon cable managers (available with model FPP-14-W-25-V2)

PART NUMBER	DESCRIPTION	DIMENSIONS (INCHES)	CONSTRUCTION	LGX PANEL SUPPORT
FPP-02-W-31	CORE WALL MOUNT ENCLOSURE W/ 2 LGX	13.00 H x 13.00 W x 3.00 D	BLACK STEEL	2 PANELS (up to 48 LC or 24 SC)
FPP-06-W-21	CORE WALL MOUNT ENCLOSURE W/ 6 LGX	13.00 H x 13.00 W x 3.00 D	BLACK STEEL	6 PANELS (up to 144 LC or 72 SC)
FPP-14-W-25-V2	CORE WALL MOUNT ENCLOSURE W/ 14 LGX	20.00 H x 20.00 W x 7.00 D	BLACK STEEL	14 PANELS (up to 288 LC or 168 SC)

IN-HOUSE ENGINEERING & PROJECT KITTING

NSI employs dedicated customer experience and solutions architects to ensure your design addresses current and future technology trends. Whether your next installation requires LYNN patch cables, custom assemblies, patch panels or other connectivity solutions, the NSI team will help with engineering and ensure everything ships kitted and ready for deployment.



CONTACT US



1841 Industrial Ave
San Angelo, TX 76904
(325) 262-4031

www.unitedtelsupply.com

UNITED
TEL • SUPPLY

and

LYNN





SLIMFIT™ INDOOR ENCLOSURES

SlimFIT™ enclosures simplify fiber connectivity and cable management. They provide a compact, easy-to-install enclosure that blends into the most residential and commercial environments.



SlimFIT™ Compact

The Compact Connection Point provides a low-profile fiber management solution for tight spaces. It easily mounts to surfaces with double-sided tape or screws.



SlimFIT™ Customer

The Customer Connection Point provides an ultra-slim fiber management solution for single gang wallboxes, low-voltage trim plates and walls.



SlimFIT™ MDU

The MDU Connection Point combines fiber management with easy cable deployment. The enclosure features a built-in fiber reel pre-loaded with 30m (100ft) of simplex 600µm single mode fiber terminated with SC/APC connectors.



SlimFIT™ Plate

The Plate Connection Point combines fiber and copper keystone management into a single enclosure. It mounts directly to single gang wallboxes, low-voltage trim plates and walls.



SlimFIT™ Duo

The Duo Connection Point provides fiber management for two SC or four LC connections. It easily mounts to surfaces with screws.



SlimFIT™ ONT

The ONT Connection Point provides a convenient, secure mounting and cable management solution for modems* and their connected fiber.

PART NUMBER	DESCRIPTION	DIMENSIONS (INCHES)	CONSTRUCTION	INCLUDED FIBER ADAPTERS
FPP-01-W-A3	SLIMFIT COMPACT CONNECTION POINT W/ SC/APC	3.75 H x 1.00 W x 0.78 D	WHITE PVC	SIMPLEX SC/APC
FPP-01-W-35	SLIMFIT CUSTOMER CONNECTION POINT	5.80 H x 3.50 W x 0.65 D	WHITE PVC	NA
FLP-35W-06501	SLIMFIT CUSTOMER CONNECTION POINT W/ SC/APC	5.80 H x 3.50 W x 0.65 D	WHITE PVC	SIMPLEX SC/APC
FLP-35W-06601	SLIMFIT CUSTOMER CONNECTION POINT W/ SC/UPC	5.80 H x 3.50 W x 0.65 D	WHITE PVC	SIMPLEX SC
FLP-35W-07301	SLIMFIT CUSTOMER CONNECTION POINT W/ LC/APC	5.80 H x 3.50 W x 0.65 D	WHITE PVC	DUPLEX LC/APC
FLP-35W-07401	SLIMFIT CUSTOMER CONNECTION POINT W/ LC/UPC	5.80 H x 3.50 W x 0.65 D	WHITE PVC	DUPLEX LC
FPP-01-W-B2	SLIMFIT MDU CONNECTION POINT W/ 30M FIBER REEL	3.75 H x 3.75 W x 1.00 D	WHITE PVC	SIMPLEX SC/APC
FPP-01-W-B6	SLIMFIT PLATE CONNECTION POINT W/ SC/APC	5.80 H x 3.50 W x 1.00 D	WHITE PVC	SIMPLEX SC/APC
FPP-02-W-B1	SLIMFIT DUO CONNECTION POINT W/ DUPLEX SC/APC	4.50 H x 3.31 W x 0.87 D	WHITE PVC	DUPLEX SC/APC
FPP-01-W-A9	SLIMFIT ONT CONNECTION POINT	6.60 H x 8.20 W x 1.90 D	WHITE PVC	NA

*Compatible ONTs (modems): Adtran 611/411/401, Calix GP1100x/803G, Ubiquiti U Fiber, DZS 2301.

CONTACT US



1841 Industrial Ave
San Angelo, TX 76904
(325) 262-4031

www.unitedtelsupply.com

UNITED
TEL·SUPPLY

and

LYNN





LGX WALL MOUNT & RACK MOUNT ENCLOSURES

LYNN offers multiple LGX-compatible wall mount enclosures, rack mount enclosures and adapter panel inserts for managing fiber connections. All enclosures are manufactured of 16-gauge steel for durability and lifelong performance.

LGX WALL MOUNT ENCLOSURES



1 Panel LGX Enclosure
(FPP-01-W-10)

Key Features

- Easy open magnetic latches
- Non-captive top & bottom entries
- Rear SC/LC/MTP coupler cutout



1 Panel LGX Enclosure
(FPP-01-W-A4)

Key Features

- Easy open magnetic latches
- Front cable & connection protection
- Non-captive top & bottom entries
- Rear SC/LC/MTP coupler cutout



2 Panel LGX Enclosure
(FPP-02-W-18)

Key Features

- Easy open magnetic latches
- Front cable & connection protection
- Non-captive top & bottom entries
- Rear SC/LC/MTP coupler cutout



4 Panel LGX Enclosure
(FPP-04-W-19)

Key Features

- Easy open magnetic latches
- Front cable & connection protection
- Non-captive top & bottom entries
- Rear SC/LC/MTP coupler cutout

PART NUMBER	DESCRIPTION	DIMENSIONS (INCHES)	LGX PANEL SUPPORT	CABLE / CONNECTION PROTECTION
FPP-01-W-10	LGX ENCLOSURE – 1 PANEL	6.13 H x 5.56 W x 1.13 D	1 PANEL (up to 24 LC or 12 SC)	
FPP-01-W-A4	LGX ENCLOSURE – 1 PANEL W/ FRONT PROTECT	9.51 H x 5.56 W x 1.36 D	1 PANEL (up to 24 LC or 12 SC)	■
FPP-02-W-18	LGX ENCLOSURE – 2 PANEL W/ FRONT PROTECT	13.25 H x 5.50 W x 2.41 D	2 PANELS (up to 48 LC or 24 SC)	■
FPP-04-W-19	LGX ENCLOSURE – 4 PANEL W/ FRONT PROTECT	13.25 H x 10.63 W x 2.41 D	4 PANELS (up to 96 LC or 48 SC)	■

CONTACT US



1841 Industrial Ave
San Angelo, TX 76904
(325) 262-4031

www.unitedtelsupply.com



and



LGX RACK MOUNT ENCLOSURES



1U LGX Bulkhead Patch Panel
(FPP-03-R1-24)

Key Features

- 3 LGX panel support
- Fits any standard 19 inch rack
- Low-cost open frame design



1U CHOICE LGX Enclosure
(FPP-03-R1-23)

Key Features

- 3 LGX panel support
- Easy release latches
- Non-captive cable entries & mounting ears



1U Standard LGX Enclosure
(FRMP-1U-V2)

Key Features

- 3 LGX panel support
- Easy open magnetic latches
- Front cable & connection protection
- Non-captive cable entries & mounting ears



1U Premium LGX Enclosure
(FPP-03-R1-03)

Key Features

- 3 LGX panel support
- Easy open magnetic latches & E-Z slide tray
- Tinted Lexan™ front cover
- Removable top & front faceplate
- Non-captive cable entries & mounting ears



2U Premium LGX Enclosure
(FPP-06-R2-04)

Key Features

- 6 LGX panel support
- Easy open magnetic latches & E-Z slide tray
- Tinted Lexan™ front cover
- Removable top & front faceplate
- Non-captive cable entries & mounting ears



3U Premium LGX Enclosure
(FPP-09-R3-05)

Key Features

- 9 LGX panel support
- Easy open magnetic latches & E-Z slide tray
- Tinted Lexan™ front cover
- Removable top & front faceplate
- Non-captive cable entries & mounting ears



4U Premium LGX Enclosure
(FPP-12-R4-06)

Key Features

- 12 LGX panel support
- Easy open magnetic latches & E-Z slide tray
- Tinted Lexan™ front cover
- Removable top & front faceplate
- Non-captive cable entries & mounting ears



8U Premium LGX Enclosure
(FPP-24-R8-07)

Key Features

- 24 LGX panel support
- Easy open magnetic latches & E-Z slide tray
- Tinted Lexan™ front cover
- Removable top & front faceplate
- Non-captive cable entries & mounting ears

PART NUMBER	DESCRIPTION	RACK SPACES	LGX PANEL SUPPORT	REMOVABLE PREMIUM COVERS	EZ-SLIDE TRAY
FPP-03-R1-24	LGX BULKHEAD RACK PATCH PANEL – 3 PANEL	1	3 PANEL (up to 72 LC or 36 SC)		
FPP-03-R1-23	LGX 1U CHOICE RACK PATCH PANEL – 3 PANEL	1	3 PANEL (up to 72 LC or 36 SC)		
FRMP-1U-V2	LGX 1U STANDARD RACK PATCH PANEL – 3 PANEL	1	3 PANEL (up to 72 LC or 36 SC)	■	■
FPP-03-R1-03	LGX 1U PREMIUM PATCH PANEL – 3 PANEL	1	3 PANEL (up to 72 LC or 36 SC)	■	■
FPP-06-R2-04	LGX 2U PREMIUM PATCH PANEL – 6 PANEL	2	6 PANEL (up to 144 LC or 72 SC)	■	■
FPP-09-R3-05	LGX 3U PREMIUM PATCH PANEL – 9 PANEL	3	9 PANEL (up to 216 LC or 108 SC)	■	■
FPP-12-R4-06	LGX 4U PREMIUM PATCH PANEL – 12 PANEL	4	12 PANEL (up to 288 LC or 144 SC)	■	■
FPP-24-R8-07	LGX 8U PREMIUM PATCH PANEL – 24 PANEL	8	24 PANEL (up to 576 LC or 288 SC)	■	■

CONTACT US

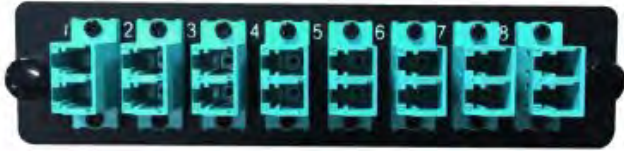


1841 Industrial Ave
San Angelo, TX 76904
(325) 262-4031

www.unitedtelsupply.com



LGX PANEL INSERTS



LYNN offers a variety of LGX adapter panel inserts for use in wall mount enclosures and rack mount panels, including options for both single mode and multimode fiber.



Clear port numbering on both the front & rear of the plate



Adapters attached securely with screws for added durability



Optional built-in shutters ensure clean ports & connections



Zirconium Ceramic or Phosphorous Bronze premium adapter construction



Available with keystone blanks for twisted pair integration

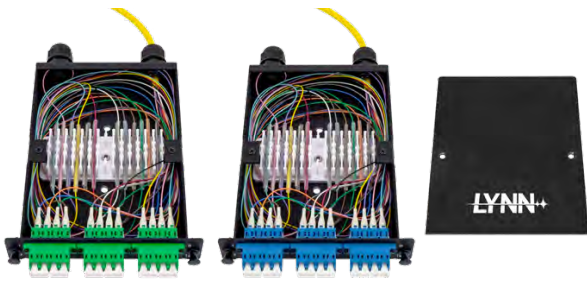
PART NUMBER	DESCRIPTION	FIBER TYPE	CONNECTOR TYPE	TOTAL CONNECTIONS	SHUTTERS
FPP-AD-L3QS-03	LGX PANEL – 3 LC QUAD W/ SHUTTERS – OM4/OM3	OM4/OM3	LC	12	■
FPP-AD-L1QS-03	LGX PANEL – 3 LC QUAD W/ SHUTTERS – OM1	OM1	LC	12	■
FPP-AD-LUQ3-03	LGX PANEL – 3 LC QUAD W/ SHUTTERS – OS2	OS2	LC	12	■
FPP-AD-LAQS-03	LGX PANEL – 3 LC/APC QUAD W/ SHUTTERS – OS2	OS2	LC/APC	12	■
FPP-AD-L3Q-03	LGX PANEL – 3 LC QUAD – OM4/OM3	OM4/OM3	LC	12	
FPP-AD-L1Q-03	LGX PANEL – 3 LC QUAD – OM1	OM1	LC	12	
FPP-AD-LUQ-03	LGX PANEL – 3 LC QUAD – OS2	OS2	LC	12	
FPP-AD-LAQ-03	LGX PANEL – 3 LC/APC QUAD – OS2	OS2	LC/APC	12	
FPP-AD-L3QS-06	LGX PANEL – 6 LC QUAD W/ SHUTTERS – OM4/OM3	OM4/OM3	LC	24	■
FPP-AD-L1QS-06	LGX PANEL – 6 LC QUAD W/ SHUTTERS – OM1	OM1	LC	24	■
FPP-AD-LUQS-06	LGX PANEL – 6 LC QUAD W/ SHUTTERS – OS2	OS2	LC	24	■
FPP-AD-LAQS-06	LGX PANEL – 6 LC/APC QUAD W/ SHUTTERS – OS2	OS2	LC/APC	24	■
FPP-AD-L3Q-06	LGX PANEL – 6 LC QUAD – OM4/OM3	OM4/OM3	LC	24	
FPP-AD-L1Q-06	LGX PANEL – 6 LC QUAD – OM1	OM1	LC	24	
FPP-AD-LUQ-06	LGX PANEL – 6 LC QUAD – OS2	OS2	LC	24	
FPP-AD-LAQ-06	LGX PANEL – 6 LC/APC QUAD – OS2	OS2	LC/APC	24	
FPP-AD-L32S-06	LGX PANEL – 6 LC DUPLEX W/ SHUTTERS – OM4/OM3	OM4/OM3	LC	12	■
FPP-AD-L12S-06	LGX PANEL – 6 LC DUPLEX W/ SHUTTERS – OM1	OM1	LC	12	■
FPP-AD-LU2S-06	LGX PANEL – 6 LC DUPLEX W/ SHUTTERS – OS2	OS2	LC	12	■
FPP-AD-LA2S-06	LGX PANEL – 6 LC/APC DUPLEX W/ SHUTTERS – OS2	OS2	LC/APC	12	■
FPP-AD-L32-06	LGX PANEL – 6 LC DUPLEX – OM4/OM3	OM4/OM3	LC	12	
FPP-AD-L12-06	LGX PANEL – 6 LC DUPLEX – OM1	OM1	LC	12	
FPP-AD-LU2-06	LGX PANEL – 6 LC DUPLEX – OS2	OS2	LC	12	
FPP-AD-LA2-06	LGX PANEL – 6 LC/APC DUPLEX – OS2	OS2	LC/APC	12	



PART NUMBER	DESCRIPTION	FIBER TYPE	CONNECTOR TYPE	TOTAL CONNECTIONS	SHUTTERS
FPP-AD-L32S-08	LGX PANEL – 8 LC DUPLEX W/ SHUTTERS – OM4/OM3	OM4/OM3	LC	16	■
FPP-AD-L12S-08	LGX PANEL – 8 LC DUPLEX W/ SHUTTERS – OM1	OM1	LC	16	■
FPP-AD-LU2S-08	LGX PANEL – 8 LC DUPLEX W/ SHUTTERS – OS2	OS2	LC	16	■
FPP-AD-LA2S-08	LGX PANEL – 8 LC/APC DUPLEX W/ SHUTTERS – OS2	OS2	LC/APC	16	■
FPP-AD-L32-08	LGX PANEL – 8 LC DUPLEX – OM4/OM3	OM4/OM3	LC	16	
FPP-AD-L12-08	LGX PANEL – 8 LC DUPLEX – OM1	OM1	LC	16	
FPP-AD-LU2-08	LGX PANEL – 8 LC DUPLEX – OS2	OS2	LC	16	
FPP-AD-LA2-08	LGX PANEL – 8 LC/APC DUPLEX – OS2	OS2	LC/APC	16	
FPP-AD-M32-03	LGX PANEL – 3 MTP DUPLEX – OM4/OM3	OM4/OM3	MTP	6	
FPP-AD-MB2-03	LGX PANEL – 3 MTP DUPLEX – OS2	OS2	MTP	6	
FPP-AD-M32-06	LGX PANEL – 6 MTP DUPLEX – OM4/OM3	OM4/OM3	MTP	12	
FPP-AD-MB2-06	LGX PANEL – 6 MTP DUPLEX – OS2	OS2	MTP	12	
FPP-AD-M31-06	LGX PANEL – 6 MTP SIMPLEX – OM4/OM3	OM4/OM3	MTP	6	
FPP-AD-MB1-06	LGX PANEL – 6 MTP SIMPLEX – OS2	OS2	MTP	6	
FPP-AD-M31-08	LGX PANEL – 8 MTP SIMPLEX – OM4/OM3	OM4/OM3	MTP	8	
FPP-AD-MB1-08	LGX PANEL – 8 MTP SIMPLEX – OS2	OS2	MTP	8	
FPP-AD-S32-06	LGX PANEL – 6 SC DUPLEX – OM4/OM3	OM4/OM3	SC	12	
FPP-AD-S12-06	LGX PANEL – 6 SC DUPLEX – OM1	OM1	SC	12	
FPP-AD-SU2-06	LGX PANEL – 6 SC DUPLEX – OS2	OS2	SC	12	
FPP-AD-SA2-06	LGX PANEL – 6 SC/APC DUPLEX – OS2	OS2	SC/APC	12	
FPP-AD-S32-03	LGX PANEL – 3 SC DUPLEX – OM4/OM3	OM4/OM3	SC	6	
FPP-AD-S12-03	LGX PANEL – 3 SC DUPLEX – OM1	OM1	SC	6	
FPP-AD-SU2-03	LGX PANEL – 3 SC DUPLEX – OS2	OS2	SC	6	
FPP-AD-SA2-03	LGX PANEL – 3 SC/APC DUPLEX – OS2	OS2	SC/APC	6	
FPP-AD-S31-08	LGX PANEL – 8 SC SIMPLEX – OM4/OM3	OM4/OM3	SC	8	
FPP-AD-S11-08	LGX PANEL – 8 SC SIMPLEX – OM1	OM1	SC	8	
FPP-AD-SU1-08	LGX PANEL – 8 SC SIMPLEX – OS2	OS2	SC	8	
FPP-AD-SA1-08	LGX PANEL – 8 SC/APC SIMPLEX – OS2	OS2	SC/APC	8	
FPP-AD-S31-06	LGX PANEL – 6 SC SIMPLEX – OM4/OM3	OM4/OM3	SC	6	
FPP-AD-S11-06	LGX PANEL – 6 SC SIMPLEX – OM1	OM1	SC	6	
FPP-AD-SU1-06	LGX PANEL – 6 SC SIMPLEX – OS2	OS2	SC	6	
FPP-AD-SA1-06	LGX PANEL – 6 SC/APC SIMPLEX – OS2	OS2	SC/APC	6	
FPP-AD-TM1-06	LGX PANEL – 6 ST SIMPLEX – OM1/OM3/OM4	OM1/OM4/OM3	ST	6	
FPP-AD-TS1-06	LGX PANEL – 6 ST SIMPLEX – OS2	OS2	ST	6	
FPP-AD-TM1-12	LGX PANEL – 12 ST SIMPLEX – OM1/OM3/OM4	OM1/OM4/OM3	ST	12	
FPP-AD-TS1-12	LGX PANEL – 12 ST SIMPLEX – OS2	OS2	ST	12	
FPP-AD-FM1-06	LGX PANEL – 6 FC SIMPLEX – OM1/OM3/OM4	OM1/OM4/OM3	FC	6	
FPP-AD-FS1-06	LGX PANEL – 6 FC SIMPLEX – OS2	OS2	FC	6	
FPP-AD-FM1-12	LGX PANEL – 12 FC SIMPLEX – OM1/OM3/OM4	OM1/OM4/OM3	FC	12	
FPP-AD-FS1-12	LGX PANEL – 12 FC SIMPLEX – OS2	OS2	FC	12	
LGX-6-KEY	LGX PANEL – 6 BLANK KEYSTONE		KEYSTONE	6	
FPP-AD-BLANK	LGX PANEL – BLANK PANEL COVER				
FPP-AD-CCH	LGX PANEL – CCH CONVERTER PLATE				



LGX SPLICE CASSETTES



LYNN manufactures LGX splice cassettes pre-terminated with a variety of connectors in various configurations. All constructions are designed for durability, low insertion loss and long-term performance.

PART NUMBER	DESCRIPTION	FIBER TYPE	CONNECTOR TYPE	TOTAL CONNECTIONS	PIGTAIL LENGTH
LGX-FPP-SA2-06	LGX SPLICE CASSETTE – 6 SC/APC DUPLEX 12F – OS2	OS2	SC/APC	12	18'
LGX-FPP-SU2-06	LGX SPLICE CASSETTE – 6 SC DUPLEX 12F – OS2	OS2	SC	12	18'
LGX-FPP-S42-06	LGX SPLICE CASSETTE – 6 SC DUPLEX 12F – OM4	OM4	SC	12	18'
LGX-FPP-S32-06	LGX SPLICE CASSETTE – 6 SC DUPLEX 12F – OM3	OM3	SC	12	18'
LGX-FPP-S12-06	LGX SPLICE CASSETTE – 6 SC DUPLEX 12F – OM1	OM1	SC	12	18'
LGX-FPP-LAQ-03	LGX SPLICE CASSETTE – 3 LC/APC QUAD 12F – OS2	OS2	LC/APC	12	18'
LGX-FPP-LUQ-03	LGX SPLICE CASSETTE – 3 LC QUAD 12F – OS2	OS2	LC	12	18'
LGX-FPP-L4Q-03	LGX SPLICE CASSETTE – 3 LC QUAD 12F – OM4	OM4	LC	12	18'
LGX-FPP-L3Q-03	LGX SPLICE CASSETTE – 3 LC QUAD 12F – OM3	OM3	LC	12	18'
LGX-FPP-L1Q-03	LGX SPLICE CASSETTE – 3 LC QUAD 12F – OM1	OM1	LC	12	18'
LGX-FPP-LAQ-06	LGX SPLICE CASSETTE – 6 LC/APC QUAD 12F – OS2	OS2	LC/APC	24	18'
LGX-FPP-LUQ-06	LGX SPLICE CASSETTE – 6 LC QUAD 12F – OS2	OS2	LC	24	18'
LGX-FPP-L4Q-06	LGX SPLICE CASSETTE – 6 LC QUAD 12F – OM4	OM4	LC	24	18'
LGX-FPP-L3Q-06	LGX SPLICE CASSETTE – 6 LC QUAD 12F – OM3	OM3	LC	24	18'
LGX-FPP-L1Q-06	LGX SPLICE CASSETTE – 6 LC QUAD 12F – OM1	OM1	LC	24	18'

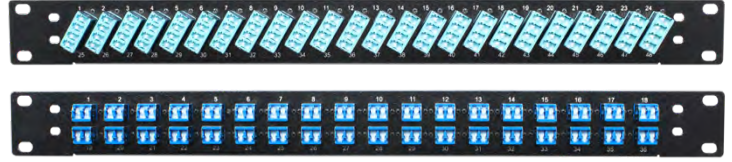
LGX MPO TO LC CASSETTES

PART NUMBER	DESCRIPTION	FIBER TYPE	MPO CONNECTIONS	LC(APC) CONNECTIONS	WIRING
FPP-CSN-PM2L2-OM4-24	LGX MPO CASSETTE – 2 MPO TO LC 24F – OM4	OM4	2	12 DUPLEX	METHOD B
FPP-CSN-PM1L2-OM4-12	LGX MPO CASSETTE – 1 MPO TO LC 12F – OM4	OM4	1	6 DUPLEX	METHOD B
FPP-CSN-PM1L2-OM4-24	LGX MPO CASSETTE – 1 MPO TO LC 24F – OM4	OM4	1	12 DUPLEX	METHOD B
FPP-CSN-PM2LU2-SM-24	LGX MPO CASSETTE – 2 MPO TO LC 24F – OS2	OS2	2	12 DUPLEX	METHOD B
FPP-CSN-PM1LU2-SM-12	LGX MPO CASSETTE – 1 MPO TO LC 12F – OS2	OS2	1	6 DUPLEX	METHOD B
FPP-CSN-PM1LU2-SM-24	LGX MPO CASSETTE – 1 MPO TO LC 24F – OS2	OS2	1	12 DUPLEX	METHOD B
FPP-CSN-PM2LA2-SM-24	LGX MPO CASSETTE – 2 MPO TO LC/APC 24F – OS2	OS2	2	12 DUPLEX	METHOD B
FPP-CSN-PM1LA2-SM-12	LGX MPO CASSETTE – 1 MPO TO LC/APC 12F – OS2	OS2	1	6 DUPLEX	METHOD B
FPP-CSN-PM2LA2-SM-24	LGX MPO CASSETTE – 1 MPO TO LC/APC 24F – OS2	OS2	1	12 DUPLEX	METHOD B



FACTORY-POPULATED BULKHEAD PATCH PANELS

Factory-populated bulkhead patch panels save installation time and cost. Bulkheads are manufactured with premium one-piece couplers rated for over 500 mating cycles and fit in a standard 19" rack space.



PART NUMBER	DESCRIPTION	RACK SPACES	FIBER TYPE	CONNECTOR TYPE	TOTAL CONNECTIONS	SHUTTERS
FP-24SSS-BE	1U FIBER BULKHEAD – 24 SIMPLEX SC – OM1	1	OM1	SC	24	
FP-36SSS-BE	1U FIBER BULKHEAD – 36 SIMPLEX SC – OM1	1	OM1	SC	36	
FP-18SS-BE	1U FIBER BULKHEAD – 18 DUPLEX SC – OM1	1	OM1	SC	36	
FP-24LL-BE	1U FIBER BULKHEAD – 24 DUPLEX LC – OM1	1	OM1	LC	48	■
FP-36LL-BE	1U FIBER BULKHEAD – 36 DUPLEX LC – OM1	1	OM1	LC	72	■
FP-48LL-BE	1U FIBER BULKHEAD – 48 DUPLEX LC – OM1	1	OM1	LC	96	■
FP-24SSS-AQ	1U FIBER BULKHEAD – 24 SIMPLEX SC – OM3	1	OM3	SC	24	
FP-36SSS-AQ	1U FIBER BULKHEAD – 36 SIMPLEX SC – OM3	1	OM3	SC	36	
FP-18SS-AQ	1U FIBER BULKHEAD – 18 DUPLEX SC – OM3	1	OM3	SC	36	
FP-24LL-AQ	1U FIBER BULKHEAD – 24 DUPLEX LC – OM3	1	OM3	LC	48	■
FP-24MM-AQ	1U FIBER BULKHEAD – 24 MTP/MPO – OM3	1	OM3	MTP/MPO	48	
FP-36LL-AQ	1U FIBER BULKHEAD – 36 DUPLEX LC – OM3	1	OM3	LC	72	■
FP-36MM-AQ	1U FIBER BULKHEAD – 36 MTP/MPO – OM3	1	OM3	MTP/MPO	72	
FP-48LL-AQ	1U FIBER BULKHEAD – 48 DUPLEX LC – OM3	1	OM3	LC	96	■
FP-48MM-AQ	1U FIBER BULKHEAD – 48 MTP/MPO – OM3	1	OM3	MTP/MPO	96	
FP-24SSS-SM	1U FIBER BULKHEAD – 24 SIMPLEX SC – OS2	1	OS2	SC	24	
FP-24SSS-SMG	1U FIBER BULKHEAD – 24 SIMPLEX SC/APC – OS2	1	OS2	SC/APC	24	
FP-36SSS-SM	1U FIBER BULKHEAD – 36 SIMPLEX SC – OS2	1	OS2	SC	36	
FP-36SSS-SMG	1U FIBER BULKHEAD – 36 SIMPLEX SC/APC – OS2	1	OS2	SC/APC	36	
FP-18SS-SM	1U FIBER BULKHEAD – 18 DUPLEX SC – OS2	1	OS2	SC	36	
FP-18SS-SMG	1U FIBER BULKHEAD – 18 DUPLEX SC/APC – OS2	1	OS2	SC/APC	36	
FP-24LL-SM	1U FIBER BULKHEAD – 24 DUPLEX LC – OS2	1	OS2	LC	48	■
FP-24LL-SMG	1U FIBER BULKHEAD – 24 DUPLEX LC/APC – OS2	1	OS2	LC/APC	48	■
FP-24MM-SM	1U FIBER BULKHEAD – 24 MTP/MPO – OS2	1	OS2	MTP/MPO	48	
FP-36LL-SM	1U FIBER BULKHEAD – 36 DUPLEX LC – OS2	1	OS2	LC	72	■
FP-36LL-SMG	1U FIBER BULKHEAD – 36 DUPLEX LC/APC – OS2	1	OS2	LC/APC	72	■
FP-36MM-SM	1U FIBER BULKHEAD – 36 MTP/MPO – OS2	1	OS2	MTP/MPO	72	
FP-48LL-SM	1U FIBER BULKHEAD – 48 DUPLEX LC – OS2	1	OS2	LC	96	■
FP-48LL-SMG	1U FIBER BULKHEAD – 48 DUPLEX LC/APC – OS2	1	OS2	LC/APC	96	■
FP-48MM-SM	1U FIBER BULKHEAD – 48 MTP/MPO – OS2	1	OS2	MTP/MPO	96	



HDA HIGH-DENSITY RACK MOUNT ENCLOSURES

The LYNN HDA Series is designed for high density installations where performance and durability are essential. Their space-saving layout provides a 33% increase in connector density compared to a standard LGX panel inserts.

HDA patch panels and enclosures mount in standard 19" rack frames and are compatible with Panduit® Opticom® panel inserts.



High-density panel layout provides 33% more connections



Large openings provide easier wiring & port access



Non-captive mounting ears provide easier rack installation



EZ-Slide tray provides smooth opening and closing and locks in open position



Easy open magnetic door allows quick panel access even in crowded racks

PART NUMBER	DESCRIPTION	RACK SPACES	HDA PANEL SUPPORT	NON-CAPTIVE MOUNTING EARS	EZ-SLIDE TRAY
FPP-04H-R1-14	HDA BULKHEAD RACK PATCH PANEL – 4 PANEL	1	4 PANEL (up to 96 LC or 48 SC)		
FPP-04H-R1-14-S	HDA BULKHEAD RACK PATCH PANEL WITH REAR CABLE MANAGEMENT – 4 PANEL	1	4 PANEL (up to 96 LC or 48 SC)		
FPP-HDA-1U	HDA 1U PREMIUM ENCLOSURE – 4 PANEL	1	4 PANEL (up to 96 LC or 48 SC)	■	■
FPP-HDA-2U	HDA 2U PREMIUM ENCLOSURE – 8 PANEL	2	8 PANEL (up to 288 LC or 96 SC)	■	■
FPP-HDA-3U	HDA 3U PREMIUM ENCLOSURE – 12 PANEL	3	12 PANEL (up to 432 LC or 144 SC)	■	■



HDA PANEL INSERTS

LYNN HDA panel inserts are constructed from 16AWG steel and are rated for over 500 mating cycles. All panel inserts feature clear port numbering on both the front and rear of the plate, and built-in LC shutters ensure clean connections every time. LYNN HDA panel inserts are compatible with Panduit® Opticom® enclosures.

PART NUMBER	DESCRIPTION	FIBER TYPE	CONNECTOR TYPE	TOTAL CONNECTIONS	SHUTTERS
FPP-AD-S12-06-A	HDA PANEL – 6 SC DUPLEX – OM1	OM1	SC	12	
FPP-AD-L1Q-06-A	HDA PANEL – 6 LC QUAD – OM1	OM1	LC	24	
FPP-AD-L1QS-06-A	HDA PANEL – 6 LC QUAD W/ SHUTTERS – OM1	OM1	LC	24	■
FPP-AD-S32-06-A	HDA PANEL – 6 SC DUPLEX – OM4/OM3	OM4/OM3	SC	12	
FPP-AD-L3Q-06-A	HDA PANEL – 6 LC QUAD – OM4/OM3	OM4/OM3	LC	24	
FPP-AD-L3QS-06-A	HDA PANEL – 6 LC QUAD W/ SHUTTERS – OM4/OM3	OM4/OM3	LC	24	■
FPP-AD-L3QS-06H-A	HDA PANEL – 6 LC QUAD EZ-ACCESS W/SHUTTERS – OM4/OM3	OM4/OM3	LC	24	■
FPP-AD-M32-06-A	HDA PANEL – 6 MTP/MPO DUPLEX – OM4/OM3	OM4/OM3	MTP/MPO	12	
FPP-AD-SU2-06-A	HDA PANEL – 6 SC DUPLEX – OS2	OS2	SC	12	
FPP-AD-SA2-06-A	HDA PANEL – 6 SC/APC DUPLEX – OS2	OS2	SC/APC	12	
FPP-AD-LUQ-06-A	HDA PANEL – 6 LC QUAD – OS2	OS2	LC	24	
FPP-AD-LAQ-06-A	HDA PANEL – 6 LC/APC QUAD – OS2	OS2	LC/APC	24	
FPP-AD-LUQS-06-A	HDA PANEL – 6 LC QUAD W/ SHUTTERS – OS2	OS2	LC	24	■
FPP-AD-LAQS-06-A	HDA PANEL – 6 LC/APC QUAD W/ SHUTTERS – OS2	OS2	LC/APC	24	■
FPP-AD-LUQS-06H-A	HDA PANEL – 6 LC QUAD EZ-ACCESS W/SHUTTERS – OS2	OS2	LC	24	■
FPP-AD-MB2-06-A	HDA PANEL – 6 MTP/MPO DUPLEX – OS2	OS2	MTP/MPO	12	
HDA-4-KEY	HDA PANEL – 4 BLANK KEYSTONE		KEYSTONE	4	
FPP-AD-4BK-04-A	HDA PANEL – 4 CAT6 UTP KEYSTONE		RJ45	4	
FPP-AD-6BK-06-A	HDA PANEL – 6 CAT6 UTP KEYSTONE		RJ45	6	
FPP-AD-BLANK	HDA PANEL – BLANK PANEL COVER				



6 LC QUAD



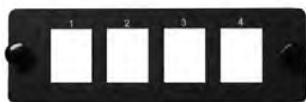
6 LC QUAD
EZ-ACCESS



6 SC DUPLEX



6 MTP/MPO



4 BLANK
KEYSTONE



4 CAT6 UTP
KEYSTONE



6 CAT6 UTP
KEYSTONE



BLANK PANEL
COVER



HDA MTP to LC CASSETTES

LYNN HDA MTP to LC cassettes feature premium MTP (MPO-type) to LC connectors wired for method B patch cables and trunks. The cassettes are constructed from 16AWG steel with clear port numbering on both the front and rear panels. Options include built-in LC shutters ensure clean connections every time, and all connectors are rated for over 500 mating cycles. LYNN HDA cassettes are compatible with Panduit® Opticom® enclosures.

PART NUMBER	DESCRIPTION	FIBER TYPE	MPO CONNECTIONS	LC CONNECTIONS	SHUTTERS
FPP-CS-PM2L2S-OM4-24-HDA	HDA MTP CASSETTE – 2 MTP TO LC 24F – OM4	OM4	2	12 DUPLEX	■
FPP-CS-PM2L2-OM4-24-HDA	HDA MTP CASSETTE – 2 MTP TO LC 24F – OM4	OM4	2	12 DUPLEX	
FPP-CS-PM3L2S-OM4-24-HDA	HDA MTP CASSETTE – 3 MTP TO LC 24F BASE-8 – OM4	OM4	3	12 DUPLEX	■
FPP-CS-PM3L2-OM4-24-HDA	HDA MTP CASSETTE – 3 MTP TO LC 24F BASE-8 – OM4	OM4	3	12 DUPLEX	
FPP-CS-PM2LU2S-SM-24-HDA	HDA MTP CASSETTE – 2 MTP TO LC 24F – OS2	OS2	2	12 DUPLEX	■
FPP-CS-PM2LU2-SM-24-HDA	HDA MTP CASSETTE – 2 MTP TO LC 24F – OS2	OS2	2	12 DUPLEX	
FPP-CS-PM3LU2S-SM-24-HDA	HDA MTP CASSETTE – 3 MTP TO LC 24F BASE-8 – OS2	OS2	3	12 DUPLEX	■
FPP-CS-PM3LU2-SM-24-HDA	HDA MTP CASSETTE – 3 MTP TO LC 24F BASE-8 – OS2	OS2	3	12 DUPLEX	
FPP-CS-PM3L2-SM-36-HDA	HDA MTP CASSETTE – 3 MTP TO LC 36F – OS2	OS2	3	18 DUPLEX	



OM4 CASSETTE



OM4 BASE-8 CASSETTE



OS2 BASE-8 CASSETTE



ADD CUSTOM CABLES TO ANY PROJECT.

LYNN is one of the largest custom cable assembly manufacturers in the United States with facilities on the East and West coasts. LYNN specializes in quick turn fiber and copper cable assemblies and are a premier member of the Corning® CAH ConnectionsSM Gold Program, ensuring product is manufactured, tested and independently audited to the highest standards.

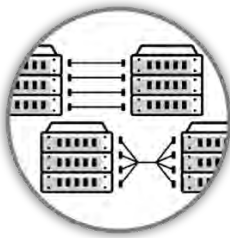


OPTIMUS EXTREME-DENSITY RACK MOUNT ENCLOSURES

The LYNN Optimus Series provides extremely high fiber density in an ultra-compact frame. Optimus enclosures leverage premium MTP connectors and shuttered LC connectors with clear port numbering. Removable top panels and front faceplates provide cable access, while side and rear cable entries ensure flexible installation. Optimus enclosures mount in standard 19" rack frames.



Models available with flat & angled panel styles



Factory customizable for different applications & connection requirements



Easy-to-read port identification on front & rear panels



Ultra-compact MDC-LC ports on OptimusMAX 288 models



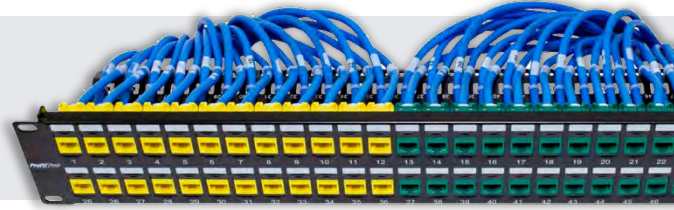
Optional 6" deep rear cable lacing shelf for OptimusMAX models

PART NUMBER	DESCRIPTION	RACK SPACES	FIBER TYPE	FRONT CONNECTORS	REAR CONNECTORS	TOTAL CONNECTIONS	PANEL STYLE
PAN-24ML-OM4	OPTIMUS 48 FIBER ENCLOSURE – 12 LC DUPLEX TO 4 MTP/MPO – OM4	1	OM4	12 DUPLEX LC	4 MTP/MPO	24	FLAT
PAN-24ML-SM	OPTIMUS 48 FIBER ENCLOSURE – 12 LC DUPLEX TO 4 MTP/MPO – OS2	1	OS2	12 DUPLEX LC	4 MTP/MPO	24	FLAT
PAN-36ML-OM4	OPTIMUS 72 FIBER ENCLOSURE – 18 LC DUPLEX TO 6 MTP/MPO – OM4	1	OM4	18 DUPLEX LC	6 MTP/MPO	36	FLAT
PAN-36ML-SM	OPTIMUS 72 FIBER ENCLOSURE – 18 LC DUPLEX TO 6 MTP/MPO – OS2	1	OS2	18 DUPLEX LC	6 MTP/MPO	36	FLAT
PAN-48ML-OM4	OPTIMUS 96 FIBER ENCLOSURE – 24 LC DUPLEX TO 8 MTP/MPO – OM4	1	OM4	24 DUPLEX LC	8 MTP/MPO	48	FLAT
PAN-48ML-SM	OPTIMUS 96 FIBER ENCLOSURE – 24 LC DUPLEX TO 8 MTP/MPO – OS2	1	OS2	24 DUPLEX LC	8 MTP/MPO	48	FLAT
PAN-72ML-OM4	OPTIMUSMAX 144 FIBER ENCLOSURE – 72 LC DUPLEX TO 12 MTP/MPO – OM4	1	OM4	72 DUPLEX LC	12 MTP/MPO	144	ANGLED
PAN-72ML-SM	OPTIMUSMAX 144 FIBER ENCLOSURE – 72 LC DUPLEX TO 12 MTP/MPO – OS2	1	OS2	72 DUPLEX LC	12 MTP/MPO	144	ANGLED
PAN-96ML-OM4	OPTIMUSMAX 192 FIBER ENCLOSURE – 96 LC DUPLEX TO 16 MTP/MPO – OM4	1	OM4	96 DUPLEX LC	16 MTP/MPO	192	ANGLED
PAN-96ML-SM	OPTIMUSMAX 192 FIBER ENCLOSURE – 96 LC DUPLEX TO 16 MTP/MPO – OS2	1	OS2	96 DUPLEX LC	16 MTP/MPO	192	ANGLED
PAN-108ML-OM4	OPTIMUSMAX 216 FIBER ENCLOSURE – 108 LC DUPLEX TO 18 MTP/MPO – OM4	1	OM4	108 DUPLEX LC	18 MTP/MPO	216	FLAT
PAN-108ML-SM	OPTIMUSMAX 216 FIBER ENCLOSURE – 108 LC DUPLEX TO 18 MTP/MPO – OS2	1	OS2	108 DUPLEX LC	18 MTP/MPO	216	FLAT
PAN-144ML-OM4	OPTIMUSMAX 288 FIBER ENCLOSURE – 144 MDC DUPLEX TO 24 MTP/MPO – OM4	1	OM4	144 DUPLEX MDC	24 MTP/MPO	288	FLAT
PAN-144ML-SM	OPTIMUSMAX 288 FIBER ENCLOSURE – 144 MDC DUPLEX TO 24 MTP/MPO – OS2	1	OS2	144 DUPLEX MDC	24 MTP/MPO	288	FLAT
PAN-CBL-MGR-SHELF	OPTIMUSMAX 1U REAR CABLE LACING SHELF	1					



PROFIT™ KEYSTONES, PATCH PANELS & CONNECTIVITY

LYNN offers a wide line of twisted pair and fiber optic keystones, patch panels and connectivity solutions. Premium features streamline installation and a variety of colors aid in cable management.



CAT5E KEYSTONE JACKS

PART NUMBER	DESCRIPTION	CABLE TYPE	FRONT CONNECTOR	REAR CONNECTOR	COLOR	RECOMMENDED TERMINATION TOOL
PRO-KEY-5P-A-25	KEYSTONE JACK – CAT5E W/110 – ALMOND	CAT5E UTP	RJ45	110 PUNCH	ALMOND	PROFIT RAPID
PRO-KEY-5P-K-25	KEYSTONE JACK – CAT5E W/110 – BLACK	CAT5E UTP	RJ45	110 PUNCH	BLACK	PROFIT RAPID
PRO-KEY-5P-B-25	KEYSTONE JACK – CAT5E W/110 – BLUE	CAT5E UTP	RJ45	110 PUNCH	BLUE	PROFIT RAPID
PRO-KEY-5P-N-25	KEYSTONE JACK – CAT5E W/110 – GREEN	CAT5E UTP	RJ45	110 PUNCH	GREEN	PROFIT RAPID
PRO-KEY-5P-G-25	KEYSTONE JACK – CAT5E W/110 – GREY	CAT5E UTP	RJ45	110 PUNCH	GREY	PROFIT RAPID
PRO-KEY-5P-I-25	KEYSTONE JACK – CAT5E W/110 – IVORY	CAT5E UTP	RJ45	110 PUNCH	IVORY	PROFIT RAPID
PRO-KEY-5P-O-25	KEYSTONE JACK – CAT5E W/110 – ORANGE	CAT5E UTP	RJ45	110 PUNCH	ORANGE	PROFIT RAPID
PRO-KEY-5P-R-25	KEYSTONE JACK – CAT5E W/110 – RED	CAT5E UTP	RJ45	110 PUNCH	RED	PROFIT RAPID
PRO-KEY-5P-W-25	KEYSTONE JACK – CAT5E W/110 – WHITE	CAT5E UTP	RJ45	110 PUNCH	WHITE	PROFIT RAPID
PRO-KEY-5P-Y-25	KEYSTONE JACK – CAT5E W/110 – YELLOW	CAT5E UTP	RJ45	110 PUNCH	YELLOW	PROFIT RAPID
PRO-KEY-5P-S-25	KEYSTONE JACK – CAT5E W/110 – SHIELDED	CAT5E STP	RJ45	110 PUNCH	METAL	PROFIT RAPID
766BK-1	KEYSTONE JACK – CAT5E COUPLER – BLACK	CAT5E UTP	RJ45	RJ45	BLACK	
766WH-1	KEYSTONE JACK – CAT5E COUPLER – WHITE	CAT5E UTP	RJ45	RJ45	WHITE	
705BL-1	KEYSTONE EZ-SNAPJACK – CAT5E W/ SELF-TERMINATING 110 – BLUE	CAT5E UTP	RJ45	110 PUNCH	BLUE	
705WH-1	KEYSTONE EZ-SNAPJACK – CAT5E W/ SELF-TERMINATING 110 – WHITE	CAT5E UTP	RJ45	110 PUNCH	WHITE	



CAT5E KEYSTONE JACK WITH 110 PUNCHDOWN (WHITE)



CAT5E KEYSTONE COUPLER (WHITE)



CAT5E EZ-SNAPJACK™ WITH 110 PUNCHDOWN (WHITE)



SHIELDED CAT5E KEYSTONE JACK (METAL)

CONTACT US



1841 Industrial Ave
San Angelo, TX 76904
(325) 262-4031

www.unitedtelsupply.com

UNITED
TEL·SUPPLY

and

LYNN



CAT6 KEYSTONE JACKS

PART NUMBER	DESCRIPTION	CABLE TYPE	FRONT CONNECTOR	REAR CONNECTOR	COLOR	RECOMMENDED TERMINATION TOOL
PRO-KEY-6P-A-25	KEYSTONE JACK – CAT6 W/110 – ALMOND	CAT6 UTP	RJ45	110 PUNCH	ALMOND	PROFIT RAPID
PRO-KEY-6P-K-25	KEYSTONE JACK – CAT6 W/110 – BLACK	CAT6 UTP	RJ45	110 PUNCH	BLACK	PROFIT RAPID
PRO-KEY-6P-B-25	KEYSTONE JACK – CAT6 W/110 – BLUE	CAT6 UTP	RJ45	110 PUNCH	BLUE	PROFIT RAPID
PRO-KEY-6P-N-25	KEYSTONE JACK – CAT6 W/110 – GREEN	CAT6 UTP	RJ45	110 PUNCH	GREEN	PROFIT RAPID
PRO-KEY-6P-G-25	KEYSTONE JACK – CAT6 W/110 – GREY	CAT6 UTP	RJ45	110 PUNCH	GREY	PROFIT RAPID
PRO-KEY-6P-I-25	KEYSTONE JACK – CAT6 W/110 – IVORY	CAT6 UTP	RJ45	110 PUNCH	IVORY	PROFIT RAPID
PRO-KEY-6P-O-25	KEYSTONE JACK – CAT6 W/110 – ORANGE	CAT6 UTP	RJ45	110 PUNCH	ORANGE	PROFIT RAPID
PRO-KEY-6P-R-25	KEYSTONE JACK – CAT6 W/110 – RED	CAT6 UTP	RJ45	110 PUNCH	RED	PROFIT RAPID
PRO-KEY-6P-W-25	KEYSTONE JACK – CAT6 W/110 – WHITE	CAT6 UTP	RJ45	110 PUNCH	WHITE	PROFIT RAPID
PRO-KEY-6P-Y-25	KEYSTONE JACK – CAT6 W/110 – YELLOW	CAT6 UTP	RJ45	110 PUNCH	YELLOW	PROFIT RAPID
PRO-KEY-6P-S-25	KEYSTONE JACK – CAT6 W/110 – SHIELDED	CAT6 STP	RJ45	110 PUNCH	METAL	PROFIT RAPID
PRO-KEY-6C-B-25	KEYSTONE JACK – CAT6 COUPLER – BLACK	CAT6 UTP	RJ45	RJ45	BLACK	
768WH-1	KEYSTONE JACK – CAT6 COUPLER – WHITE	CAT6 UTP	RJ45	RJ45	WHITE	
PRO-KEY-6C-S-25	KEYSTONE JACK – CAT6 COUPLER – SHIELDED	CAT6 STP	RJ45	RJ45	METAL	
706BL-1	KEYSTONE EZ-SNAPJACK – CAT6 W/ SELF-TERMINATING 110 – BLUE	CAT6 UTP	RJ45	110 PUNCH	BLUE	
706WH-1	KEYSTONE EZ-SNAPJACK – CAT6 W/ SELF-TERMINATING 110 – WHITE	CAT6 UTP	RJ45	110 PUNCH	WHITE	



CAT6 KEYSTONE JACK WITH 110 PUNCHDOWN (WHITE)



CAT6 KEYSTONE COUPLER (WHITE)



CAT6 EZ-SNAPJACK™ WITH 110 PUNCHDOWN (BLUE)



SHIELDED CAT6 KEYSTONE JACK (METAL)



CAT6A KEYSTONE JACKS

PART NUMBER	DESCRIPTION	CABLE TYPE	FRONT CONNECTOR	REAR CONNECTOR	COLOR	RECOMMENDED TERMINATION TOOL
PRO-KEY-AP-K-25	KEYSTONE JACK – CAT6A W/110 – BLACK	CAT6A UTP	RJ45	110 PUNCH	BLACK	PROFIT RAPID
PRO-KEY-AP-B-25	KEYSTONE JACK – CAT6A W/110 – BLUE	CAT6A UTP	RJ45	110 PUNCH	BLUE	PROFIT RAPID
PRO-KEY-AP-N-25	KEYSTONE JACK – CAT6A W/110 – GREEN	CAT6A UTP	RJ45	110 PUNCH	GREEN	PROFIT RAPID
PRO-KEY-AP-G-25	KEYSTONE JACK – CAT6A W/110 – GREY	CAT6A UTP	RJ45	110 PUNCH	GREY	PROFIT RAPID
PRO-KEY-AP-O-25	KEYSTONE JACK – CAT6A W/110 – ORANGE	CAT6A UTP	RJ45	110 PUNCH	ORANGE	PROFIT RAPID
PRO-KEY-AP-R-25	KEYSTONE JACK – CAT6A W/110 – RED	CAT6A UTP	RJ45	110 PUNCH	RED	PROFIT RAPID
PRO-KEY-AP-W-25	KEYSTONE JACK – CAT6A W/110 – WHITE	CAT6A UTP	RJ45	110 PUNCH	WHITE	PROFIT RAPID
PRO-KEY-AP-S-25	KEYSTONE JACK – CAT6A W/110 – SHIELDED	CAT6A STP	RJ45	110 PUNCH	METAL	PROFIT RAPID
770BK-1	KEYSTONE JACK – CAT6A COUPLER – BLACK	CAT6A UTP	RJ45	RJ45	BLACK	
770WH-1	KEYSTONE JACK – CAT6A COUPLER – WHITE	CAT6A UTP	RJ45	RJ45	WHITE	
PRO-KEY-AC-S-25	KEYSTONE JACK – CAT6A COUPLER – SHIELDED	CAT6A STP	RJ45	RJ45	METAL	
751-1	KEYSTONE JACK – CAT6A W/ SELF-TERMINATING 110 – SHIELDED	CAT6A STP	RJ45	110 PUNCH	METAL	
752BL-1	KEYSTONE JACK – CAT6A W/ SELF-TERMINATING 110 – BLUE	CAT6A UTP	RJ45	110 PUNCH	BLUE	
752WH-1	KEYSTONE JACK – CAT6A W/ SELF-TERMINATING 110 – WHITE	CAT6A UTP	RJ45	110 PUNCH	WHITE	



CAT6A KEYSTONE JACK WITH 110 PUNCHDOWN (ORANGE)



CAT6A KEYSTONE COUPLER (WHITE)



CAT6A SELF-TERMINATING WITH 110 PUNCHDOWN (BLUE)



SHIELDED CAT6A KEYSTONE JACK (METAL)

PROFIT™ RAPID TERMINATION TOOL

The LYNN ProFIT™ Rapid Termination Tool (part number PRO-KEY-TOOL-KIT) quickly terminates 110-style punchdown connections on keystone jacks. The tool features an ergonomic design and a replaceable die with cutting blades.



FIBER OPTIC KEYSTONE JACKS

PART NUMBER	DESCRIPTION	CABLE TYPE	FRONT CONNECTOR	REAR CONNECTOR	COLOR	RECOMMENDED TERMINATION TOOL
KEY-LC2-AQ	KEYSTONE JACK – MULTIMODE OM3/OM4 FIBER COUPLER – AQUA DUPLEX LC	OM3/OM4	DUPLEX LC	DUPLEX LC	AQUA	
KEY-LC2-BE	KEYSTONE JACK – MULTIMODE OM1 FIBER COUPLER – BEIGE DUPLEX LC	OM1	DUPLEX LC	DUPLEX LC	BEIGE	
KEY-LC2-BL	KEYSTONE JACK – SINGLE MODE FIBER COUPLER – BLUE DUPLEX LC	OS2	DUPLEX LC	DUPLEX LC	BLUE	
KEY-LC2-GN	KEYSTONE JACK – SINGLE MODE FIBER COUPLER – GREEN DUPLEX LC/APC	OS2	DUPLEX LC/APC	DUPLEX LC/APC	GREEN	
KEY-SC1-AQ	KEYSTONE JACK – MULTIMODE OM3/OM4 FIBER COUPLER – AQUA SIMPLEX SC	OM3/OM4	SIMPLEX SC	SIMPLEX SC	AQUA	
KEY-SC1-BE	KEYSTONE JACK – MULTIMODE OM1 FIBER COUPLER – BEIGE SIMPLEX SC	OM1	SIMPLEX SC	SIMPLEX SC	BEIGE	
KEY-SC1-BL	KEYSTONE JACK – SINGLE MODE FIBER COUPLER – BLUE SIMPLEX SC	OS2	SIMPLEX SC	SIMPLEX SC	BLUE	
KEY-SC1-GN	KEYSTONE JACK – SINGLE MODE FIBER COUPLER – GREEN SIMPLEX SC/APC	OS2	SIMPLEX SC/APC	SIMPLEX SC/APC	GREEN	



SPECIALTY KEYSTONE JACKS

PART NUMBER	DESCRIPTION	CABLE TYPE	FRONT CONNECTOR	REAR CONNECTOR	COLOR
PRO-KEY-F-F-3G-AL-1	KEYSTONE JACK – RG6/RG59 COAXIAL F COUPLER – ALMOND	RG6/RG59	FEMALE F	FEMALE F	ALMOND
PRO-KEY-F-F-3G-WH-1	KEYSTONE JACK – RG6/RG59 COAXIAL F COUPLER – WHITE	RG6/RG59	FEMALE F	FEMALE F	WHITE
PRO-KEY-BLANK-AL-25	KEYSTONE BLANK INSERT – ALMOND				ALMOND
PRO-KEY-BLANK-W-25	KEYSTONE BLANK INSERT – WHITE				WHITE



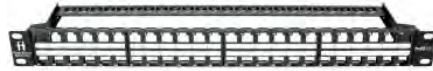
KEYSTONE JACK PATCH PANELS



1U Unloaded 24-port Jack Panel
(PRO-CPP-BLANK-1U-24)

Key Features

- 1 rack unit tall & 19" wide
- 24 unloaded keystone ports
- Built-in rear cable management
- Matching front & rear port labeling
- Keystone jacks mount flush in ports
- Flat panel style



1U Unloaded 48-port Jack Panel
(PRO-CPP-BLANK-1U-48)

Key Features

- 1 rack unit tall & 19" wide
- 48 unloaded keystone ports
- Built-in rear cable management
- Matching front & rear port labeling
- Keystone jacks mount flush in ports
- Flat panel style



1U Unloaded 48-port Angled Jack Panel
(PRO-CPP-BLANK-1U-48V)

Key Features

- 1 rack unit tall & 19" wide
- 48 unloaded keystone ports
- Built-in rear cable management
- Matching front & rear port labeling
- Keystone jacks mount flush in ports
- Angled panel style



2U Unloaded 48-port Jack Panel
(PRO-CPP-BLANK-2U-48)

Key Features

- 2 rack units tall & 19" wide
- 48 unloaded keystone ports
- Built-in rear cable management
- Matching front & rear port labeling
- Keystone jacks mount flush in ports
- Flat panel style



1U 24-port Panel with CAT5E Keystones
(PRO-CPP-24-CAT5E-19)

Key Features

- 1 rack unit tall & 19" wide
- 24-ports pre-loaded with unshielded CAT5E keystones
- RJ45 to 110-punchdown style keystones
- Built-in rear cable management
- Matching front & rear port labeling
- Flat panel style



1U 24-port Panel with CAT6 Keystones
(PRO-CPP-24-CAT6-19)

Key Features

- 1 rack unit tall & 19" wide
- 24-ports pre-loaded with unshielded CAT6 keystones
- RJ45 to 110-punchdown style keystones
- Built-in rear cable management
- Matching front & rear port labeling
- Flat panel style



2U 48-port Panel with CAT5E Keystones
(PRO-CPP-48-CAT5E-19)

Key Features

- 2 rack units tall & 19" wide
- 48-ports pre-loaded with unshielded CAT5E keystones
- RJ45 to 110-punchdown style keystones
- Built-in rear cable management
- Matching front & rear port labeling
- Flat panel style



2U 48-port Panel with CAT6 Keystones
(PRO-CPP-48-CAT6-19)

Key Features

- 2 rack units tall & 19" wide
- 48-ports pre-loaded with unshielded CAT6 keystones
- RJ45 to 110-punchdown style keystones
- Built-in rear cable management
- Matching front & rear port labeling
- Flat panel style

PART NUMBER	DESCRIPTION	RACK SPACES	PORTS	PORT LOADING	PANEL STYLE	REAR CABLE MANAGEMENT
PRO-CPP-BLANK-1U-24	1U UNLOADED 24-PORT JACK PANEL	1	24	UNLOADED	FLAT	■
PRO-CPP-BLANK-1U-48	1U UNLOADED 48-PORT JACK PANEL	1	48	UNLOADED	FLAT	■
PRO-CPP-BLANK-1U-48V	1U UNLOADED 48-PORT ANGLED JACK PANEL	1	48	UNLOADED	ANGLED	■
PRO-CPP-BLANK-2U-48	2U UNLOADED 48-PORT JACK PANEL	2	48	UNLOADED	FLAT	■
PRO-CPP-24-CAT5E-19	1U 24-PORT PANEL WITH CAT5E KEYSTONES	1	24	CAT5E UTP	FLAT	■
PRO-CPP-24-CAT6-19	1U 24-PORT PANEL WITH CAT6 KEYSTONES	1	24	CAT6 UTP	FLAT	■
PRO-CPP-48-CAT5E-19	2U 48-PORT PANEL WITH CAT5E KEYSTONES	2	48	CAT5E UTP	FLAT	■
PRO-CPP-48-CAT6-19	2U 48-PORT PANEL WITH CAT6 KEYSTONES	2	48	CAT6 UTP	FLAT	■

CONTACT US



1841 Industrial Ave
San Angelo, TX 76904
(325) 262-4031

www.unitedtelsupply.com



and



KEYSTONE JACK WALLPLATES

LYNN wallplates securely mount standard-sized keystone couplers and adapters. They are available with one, two, three, four or six ports and are designed for a single gang box or trim ring. They are available in white or ivory tinted plastic.



PART NUMBER	DESCRIPTION	SIZE	COLOR	KEYSTONE PORTS	CONSTRUCTION
PRO-FP-KEY-1-W	ONE PORT KEYSTONE WALLPLATE – WHITE	SINGLE GANG	WHITE	1	PLASTIC
PRO-FP-KEY-1-I	ONE PORT KEYSTONE WALLPLATE – IVORY	SINGLE GANG	IVORY	1	PLASTIC
PRO-FP-KEY-2-W	TWO PORT KEYSTONE WALLPLATE – WHITE	SINGLE GANG	WHITE	2	PLASTIC
PRO-FP-KEY-2-I	TWO PORT KEYSTONE WALLPLATE – IVORY	SINGLE GANG	IVORY	2	PLASTIC
PRO-FP-KEY-3-W	THREE PORT KEYSTONE WALLPLATE – WHITE	SINGLE GANG	WHITE	3	PLASTIC
PRO-FP-KEY-3-I	THREE PORT KEYSTONE WALLPLATE – IVORY	SINGLE GANG	IVORY	3	PLASTIC
PRO-FP-KEY-4-W	FOUR PORT KEYSTONE WALLPLATE – WHITE	SINGLE GANG	WHITE	4	PLASTIC
PRO-FP-KEY-4-I	FOUR PORT KEYSTONE WALLPLATE – IVORY	SINGLE GANG	IVORY	4	PLASTIC
PRO-FP-KEY-6-W	SIX PORT KEYSTONE WALLPLATE – WHITE	SINGLE GANG	WHITE	6	PLASTIC
PRO-FP-KEY-6-I	SIX PORT KEYSTONE WALLPLATE – IVORY	SINGLE GANG	IVORY	6	PLASTIC

KEYSTONE JACK SURFACE MOUNT BOXES

LYNN surface boxes securely mount standard-sized keystone couplers and adapters with added room for cable management. They are available with one or two ports and are designed to be screwed or taped to surfaces. They are available in white or ivory tinted plastic.



PART NUMBER	DESCRIPTION	SIZE (INCHES)	COLOR	KEYSTONE PORTS	CONSTRUCTION
PRO-SMB-KEY-1-W	ONE PORT KEYSTONE SURFACE BOX – WHITE	1.2 H x 1.2 W x 2.0 D	WHITE	1	PLASTIC
PRO-SMB-KEY-1-I	ONE PORT KEYSTONE SURFACE BOX – IVORY	1.2 H x 1.2 W x 2.0 D	IVORY	1	PLASTIC
PRO-SMB-KEY-2-W	TWO PORT KEYSTONE SURFACE BOX – WHITE	1.2 H x 2.0 W x 2.0 D	WHITE	2	PLASTIC
PRO-SMB-KEY-2-I	TWO PORT KEYSTONE SURFACE BOX – IVORY	1.2 H x 2.0 W x 2.0 D	IVORY	2	PLASTIC



WALL MOUNT VERTICAL RACK BRACKETS

LYNN vertical rack brackets securely manage rack panels, electronics and other 19" rack mount devices in a 90-degree position. Their space saving design mounts flush against the wall and their reinforced design supports up to 135 lbs. of load capacity.



PART NUMBER	DESCRIPTION	RACK SPACES	DIMENSIONS (INCHES)	CONSTRUCTION	LOAD RATING
MB2	2U VERTICAL WALL MOUNT RACK BRACKET	2	3.5 H x 19.0 W x 4.2 D	BLACK STEEL	135 LBS
MB4	4U VERTICAL WALL MOUNT RACK BRACKET	4	7.0 H x 19.0 W x 7.7 D	BLACK STEEL	135 LBS
MB6	6U VERTICAL WALL MOUNT RACK BRACKET	6	10.5 H x 19.0 W x 11.2 D	BLACK STEEL	135 LBS

WALL MOUNT HINGED RACK BRACKETS

LYNN hinged rack brackets securely manage rack panels, electronics and other 19" rack mount devices while providing swing-out access to rear panels and connections. Their space saving design mounts flush against the wall and an oversized rear opening accommodates through-the-wall cabling.



PART NUMBER	DESCRIPTION	RACK SPACES	DIMENSIONS (INCHES)	CONSTRUCTION	LOAD RATING
HB1	1U HINGED WALL MOUNT RACK BRACKET	1	1.8 H x 19.0 W x 6.0 D	BLACK STEEL	30 LBS
HB2	2U HINGED WALL MOUNT RACK BRACKET	2	3.5 H x 19.0 W x 6.0 D	BLACK STEEL	30 LBS
HB3	3U HINGED WALL MOUNT RACK BRACKET	3	5.3 H x 19.0 W x 6.0 D	BLACK STEEL	30 LBS
HB4	4U HINGED WALL MOUNT RACK BRACKET	4	7.0 H x 19.0 W x 6.0 D	BLACK STEEL	30 LBS
HB6	6U HINGED WALL MOUNT RACK BRACKET	6	11.7 H x 19.0 W x 6.0 D	BLACK STEEL	30 LBS

CABLE MANAGERS



HORIZONTAL
CABLE MANAGER



ANGLED
CABLE MANAGER



DUCT
CABLE MANAGER



SIDE MOUNT
CABLE MANAGER

PART NUMBER	DESCRIPTION	STYLE	RACK SPACES	CABLE RINGS	CONSTRUCTION
PRO-CBL-MGR-1U-5PR	1U HORIZONTAL CABLE MANAGER	HORIZONTAL (FLAT)	1	5	BLACK STEEL
PRO-CBL-MGR-1UV-4PR	1U ANGLED CABLE MANAGER	ANGLED	1	4	BLACK STEEL
CBL-MGR-1U-2	1U SINGLE DUCT CABLE MANAGER	DUCT	1	NA	BLACK STEEL
CBL-MGR-1U-24	1U DOUBLE DUCT CABLE MANAGER	DUCT	1	NA	BLACK STEEL
CBL-MGR-1U-SHELF	1U REAR CABLE LACING SHELF	LACING SHELF	1	NA	BLACK STEEL
PRO-CBL-MGR-2U-5PR	2U HORIZONTAL CABLE MANAGER	HORIZONTAL (FLAT)	2	5	BLACK STEEL
CBL-MGR-2U	2U SINGLE DUCT CABLE MANAGER	DUCT	2	NA	BLACK STEEL
MET-1U-SM-V2	SIDE/RAIL MOUNT CABLE MANAGER	SIDE/RAIL MOUNT	1	1	PLASTIC
MET-1U-UM	SIDE/RAIL MOUNT CABLE MANAGER	SIDE/RAIL MOUNT	1	1	BLACK STEEL





WHY PARTNER WITH LYNN FOR CUSTOM CABLES?

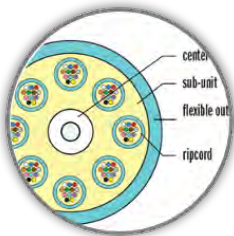
LYNN is one of the largest custom cable assembly manufacturers in the United States with facilities on the East and West coasts. We specialize in quick turn fiber and copper cable assemblies and are a premier member of the Corning® CAH ConnectionsSM Gold Program, ensuring product is manufactured, tested and independently audited to the highest standards.

WHY PURCHASE CUSTOM PRE-TERMINATED CABLES?

Pre-terminated cables provide a plug-and-play solution for connections between switches, servers, patch panels and other network and AV equipment. They deliver guaranteed quality and performance, reduce onsite installation labor, reduce warehouse and operational costs, and provide you access to premium products and components.



CUSTOMIZED & OPTIMIZED FOR YOUR INSTALLATION



Made-to-Order Based on Your Requirements



Simplex, Duplex & Multi-Strand Counts



Premium Connectors with Custom Stagger Length & Breakout



Indoor & Indoor/Outdoor Constructions



Optional Armoring for Protection & Durability



Corning Bend-Insensitive Fiber



Optional Spooling & Pull-Eye for Easy Deployment



100% Tested Including Report & Labeling



Serialization for Traceability



Optional Slim Trunks for 8, 12 & 24 Strand Count Cables



CONTACT US



1841 Industrial Ave
San Angelo, TX 76904
(325) 262-4031

www.unitedtelsupply.com

UNITED
TEL • SUPPLY

and

LYNN

