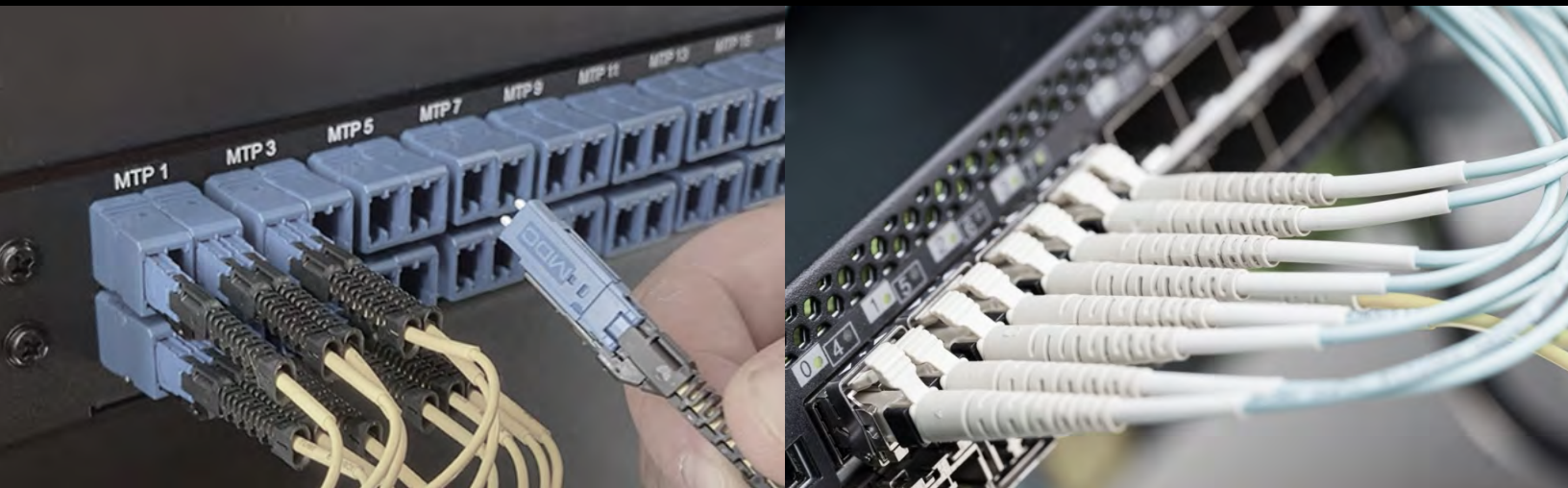


# LYNN FIBER OPTIC CABLES

PATCH CORDS & QUICK TURN CUSTOM ASSEMBLIES



CONTACT US



1841 Industrial Ave  
San Angelo, TX 76904  
(325) 262-4031

[www.unitedtelsupply.com](http://www.unitedtelsupply.com)



and





## WHY PARTNER WITH LYNN FOR CUSTOM CABLES?

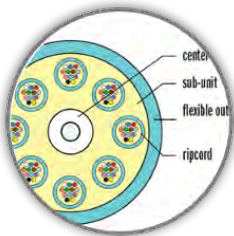
LYNN is one of the largest custom cable assembly manufacturers in the United States with facilities on the East and West coasts. We specialize in quick turn fiber and copper cable assemblies and are a premier member of the Corning® CAH Connections<sup>SM</sup> Gold Program, ensuring product is manufactured, tested and independently audited to the highest standards.

## WHY PURCHASE CUSTOM PRE-TERMINATED CABLES?

Pre-terminated cables provide a plug-and-play solution for connections between switches, servers, patch panels and other network and AV equipment. They deliver guaranteed quality and performance, reduce onsite installation labor, reduce warehouse and operational costs, and provide you access to premium products and components.



## CUSTOMIZED & OPTIMIZED FOR YOUR INSTALLATION



Made-to-Order Based on Your Requirements



Simplex, Duplex & Multi-Strand Counts



Premium Connectors with Custom Stagger Length & Breakout



Indoor & Indoor/Outdoor Constructions



Optional Armoring for Protection & Durability



Corning Bend-Insensitive Fiber



Optional Spooling & Pull-Eye for Easy Deployment



100% Tested Including Report & Labeling



Serialization for Traceability



Optional Slim Trunks for 8, 12 & 24 Strand Count Cables



CONTACT US



1841 Industrial Ave  
San Angelo, TX 76904  
(325) 262-4031

[www.unitedtelsupply.com](http://www.unitedtelsupply.com)



## POPULAR PATCH CORDS & PREMADES



### Standard Patch Cords

- Affordable, high-quality cables
- Available in multimode & single mode
- Available with a variety of connectors
- Stock lengths for quick shipment
- Available in custom lengths, constructions & strand counts



### Corning® Gold Patch Cords

- Cables guaranteed to deliver optimum performance
- Available in multimode & single mode
- Available with a variety of connectors, including uniboot LC
- Built on-demand in custom lengths & configurations



### Bright Patch Cords

- Self-powered LEDs let you illuminate connectors for easy tracing
- Available in multimode & single mode
- Duplex uniboot LC connectors
- Stock lengths for quick shipment



### MTP (MPO type) Patch Cords

- Ideal for high-speed connections (100G+)
- Premium MTP (MPO type) connectors
- ClearCurve® bend-insensitive fiber
- 100% tested including report
- Stock lengths for quick shipment; also available in custom lengths & constructions



### Universal LC Elite™ Patch Cords

- Toolless reverse polarity
- Mini LC-ready with simple trigger change for high-density installations
- Available in multimode & single mode
- Duplex LC connectors with push-pull trigger
- Stock lengths for quick shipment; also available in custom lengths & constructions



### Flat Drop Cable

- UV & water-resistant outdoor jacket
- Available in toneable & non-toneable configurations
- Available in Optitap to blunt & Optitap to SC APC configurations
- Stock lengths for quick shipment; also available in custom lengths & constructions



### Ruggedized Patch Cords

- UV & water-resistant jacket
- Thickened jacket for added protection and stapling
- Stock lengths for quick shipment; also available in custom lengths & constructions



### Micro-Armored Patch Cords

- UV & water-resistant jacket
- Internal steel micro-armor for added protection from abrasion, cutting & rodents
- Stock lengths for quick shipment; also available in custom lengths & constructions

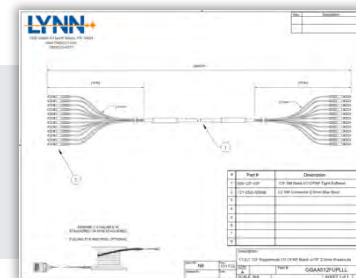


### Pushable / Pullable Bullet Fiber

- UV & water-resistant jacket
- Added rigidity to eliminate kinks when pushing & pulling through holes & duct
- Internal steel micro-armor for added protection
- Stock lengths for quick shipment; also available in custom lengths & constructions

## IN-HOUSE ENGINEERING & PROJECT KITTING.

NSI employs dedicated customer experience and solutions architects to ensure your design addresses current and future technology trends. Whether your next installation requires LYNN patch cables, custom assemblies, patch panels or other connectivity solutions, the NSI team will help with engineering and ensure everything ships kitted and ready for deployment.



# LYNN | FIBER OPTIC PATCH CORDS & CUSTOM ASSEMBLIES

|                                   | STANDARD PATCH CORDS                                | CORNING® GOLD PATCH CORDS               | BRIGHT PATCH CORDS | RUGGEDIZED PATCH CORDS           | MICRO-ARMOR PATCH CORDS          | PUSH/PULL BULLET FIBER | CUSTOM TRUNKS & ASSEMBLIES                          |
|-----------------------------------|---|---|--------------------|----------------------------------|----------------------------------|------------------------|---|
| STOCKED MINIMUM LENGTH            | 1.5 FT  | NA                                      | 3 FT               | 25 FT                            | 1 FT                             | 10 FT                  | NA  |
| STOCKED MAXIMUM LENGTH            | 130 FT  | NA                                      | 50 FT              | 300 FT                           | 300 FT                           | 300 FT                 | NA  |
| AVAILABLE IN CUSTOM LENGTHS       | ■   | ■                                       | ■                  | ■                                | ■                                | ■                      | ■   |
| STANDARD STRAND COUNT             | SIMPLEX / DUPLEX                                    | SIMPLEX / DUPLEX                        | DUPLEX             | SIMPLEX / DUPLEX                 | SIMPLEX / 2, 6 & 12 STRAND       | SIMPLEX                | NA  |
| AVAILABLE IN CUSTOM STRAND COUNTS |   |   |                    | ■                                | ■                                |                        | ■   |
| STANDARD CONNECTORS               | LC / SC / ST / FC / MTRJ / MPO / MTP (ALL POLISHES) | LC / SC / ST / FC / MTRJ (ALL POLISHES) | LC                 | LC / SC / ST / FC (ALL POLISHES) | LC / SC / ST / FC (ALL POLISHES) | SC APC                 | LC / SC / ST / FC / MTRJ / MPO / MTP (ALL POLISHES) |
| AVAILABLE IN CUSTOM CONNECTORS    | ■   |   |                    | ■                                | ■                                |                        | ■   |
| OPTIONAL LC UNIBOOT CONNECTORS    | ■   | ■                                       | ■                  | ■                                | ■                                |                        | ■   |
| OPTIONAL LC PUSH/PULL TRIGGER     | ■   |   |                    | ■                                | ■                                |                        | ■   |
| INTEGRATED TRACEABLE LED          |   |   | ■                  |                                  |                                  |                        | ■   |
| MADE IN USA AVAILABLE             | ■   | ■                                       | ■                  | ■                                | ■                                |                        | ■   |
| 100% TESTED WITH REPORT           | ■   | ■                                       | ■                  | ■                                | ■                                | ■                      | ■   |
| BEND-INSENSITIVE FIBER            | ■   | ■                                       | ■                  | ■                                | ■                                | ■                      | ■   |
| OUTDOOR RATED                     |   |   |                    | ■                                | ■                                | ■                      | ■   |
| STANDARD ALUMINUM (AIA) ARMOR     |   |   |                    |                                  |                                  |                        | ■   |
| STAINLESS STEEL MICRO-ARMOR       | ■   |   |                    |                                  | ■                                | ■                      | ■   |
| JACKET CONSTRUCTION               | INDOOR/ OUTDOOR OFNR / OFNP / LSZH                  | INDOOR/ OUTDOOR OFNR / OFNP / LSZH      | INDOOR OFNR        | INDOOR/ OUTDOOR OFNR             | INDOOR/ OUTDOOR LSZH             | INDOOR/ OUTDOOR LSZH   | INDOOR/ OUTDOOR OFNR / OFNP / LSZH                  |
| AVAILABLE IN MULTIPLE COLORS      |   | ■                                       |                    | ■                                | ■                                | ■                      | ■   |



CONTACT US



1841 Industrial Ave  
San Angelo, TX 76904  
(325) 262-4031

www.unitedtelsupply.com



and

